



to



Ysgol Mynydd Isa

Nursery



Staff



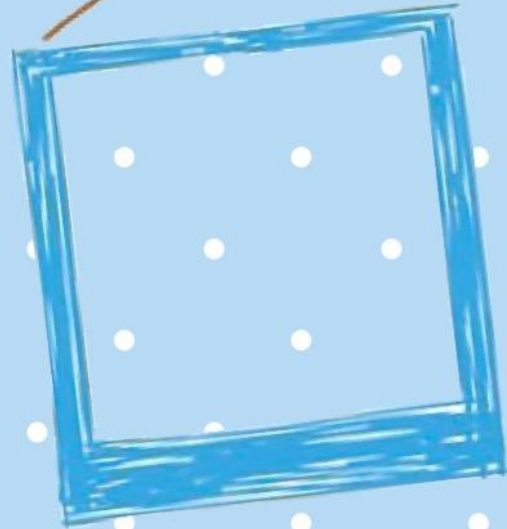
Mrs Edwards
Class Teacher



Mrs Keighley
Learning support



Mrs Christopher
Learning support



Learning support
- TBD

Entrance / exit and timings

You will drop off your child at either the nursery door or the main reception door where they will be met by staff members who will greet them and guide them to the cloakroom to help hang their belongings.
At pick up time, the children will be brought to one of the doors and they will be handed over one by one to you.

In a morning session you will drop off at the nursery door and pick up from the main entrance door.



Session times

Red Group

Mon-Wed 9.00-11.30am

Thurs-Fri - 12.45-3.15pm

Yellow Group

Mon-Wed 12.45-3.15pm

Thurs-Fri - 9.00-11.30am



In an afternoon session you will drop off at the main entrance door and pick up from the nursery door.



Our Cloakroom



In our cloakroom each child will be given a peg to hang their coat on. Next to each peg there will be a picture and your child's name. We will be sending a copy of the picture to you via class dojo so you will have the opportunity to talk to your child about their peg. This will help your child become familiar with it by the time they start school.

Uniform

Our uniform

is -

Red jumper or cardigan

White polo t-shirt

Black or grey trousers/grey skirt/
pinafore dress

Black shoes

Optional summer wear: red gingham
dress/grey shorts



Uniform can be
purchased from
Forrester Sports in
Mold or online at
www.monkhouse.com

Snack

In Nursery we offer a healthy snack during the session.

The children will also have a drink of milk.



Snack is paid
termly via
School
Gateway



What do Nursery need to bring to school?

A suitable coat for all weathers - we spend a lot of time outdoors!

Hat/gloves/scarf/sun hat - weather dependent.

Children do not require a PE kit in Nursery; they will start formal PE sessions in Reception

Children do not require their own water bottle - water/milk is provided during the session and on request.

Book bags are not required in the first half term. Mrs Edwards will notify you when you need to start to bring one.

We kindly ask if you can please ensure ALL UNIFORM is clearly named including coats and shoes

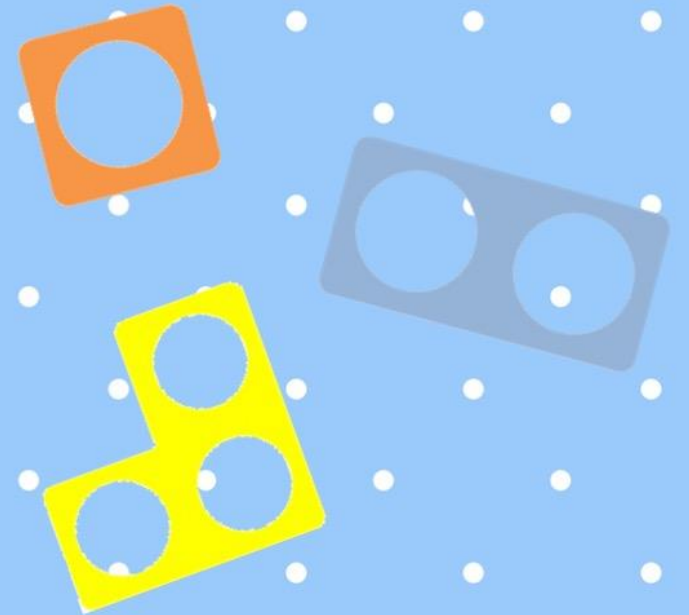
Curriculum

From September 2021, Ysgol Mynydd Isa have been using the New Curriculum for Wales.

A guide for children, young people and families can be found on the government website.



In Nursery we follow Read, Write inc to teach phonics, and Numicon to teach number.



Keeping up to date with your child's progress and achievements

During the academic year, we have two informal parents consultations, and an end of year progress report to keep you updated on your child's learning and achievements.

In school, we use 'Class Dojo' as a communication platform; teachers use the 'class story' and 'school story' element to inform parents of class news, reminders, or changes to the class routine etc.



Keeping in touch

Here at Ysgol Mynydd Isa we have an 'open door policy'. This means if you have a concern about your child or a question about school, learning or anything else, you should talk to Mrs Edwards at the end of the session. You can relay messages such as changes to who is picking up to support staff at the beginning of the session to be passed on to Mrs Edwards, or if you have an urgent worry or concern, please contact the school office.

